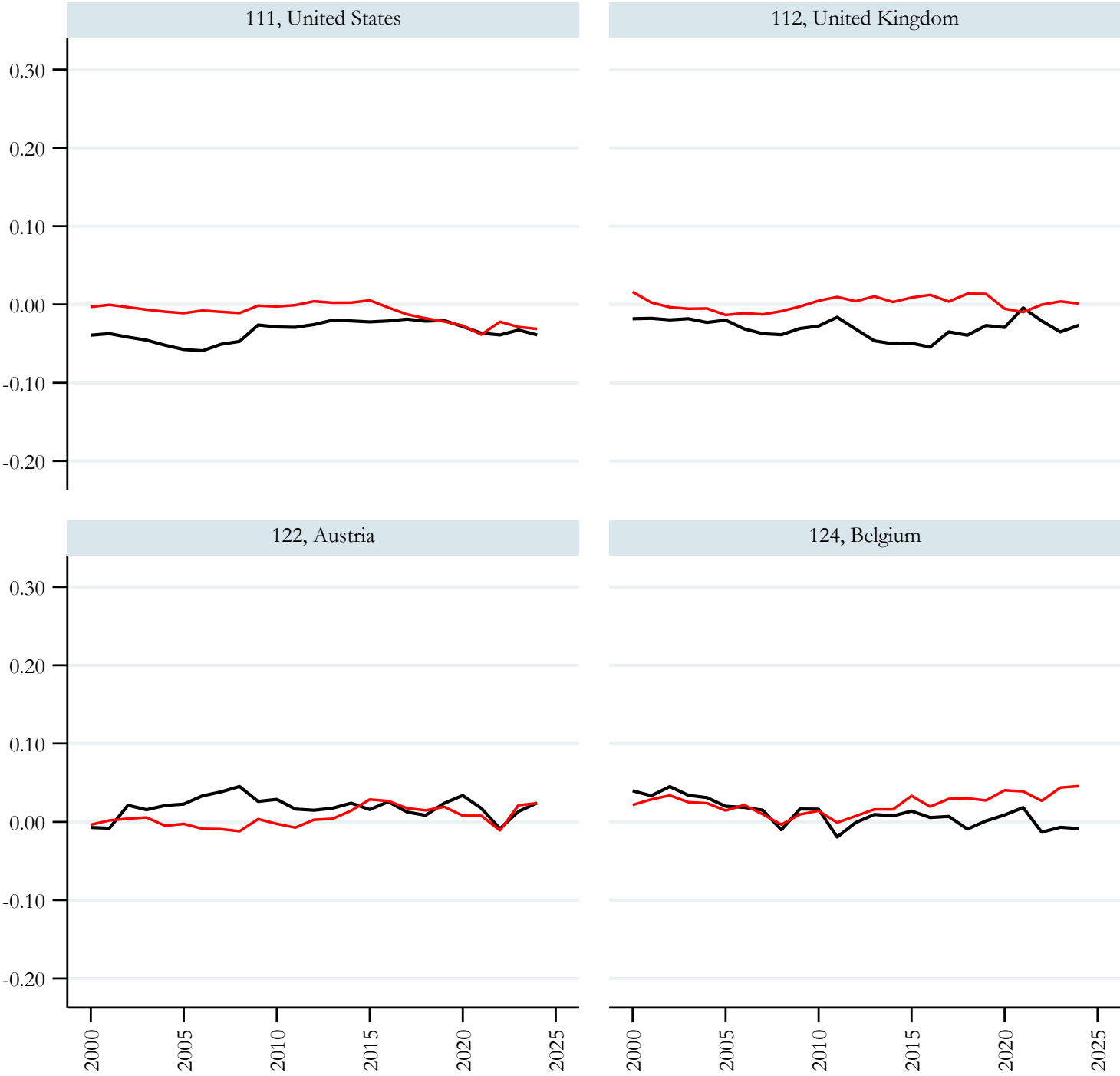


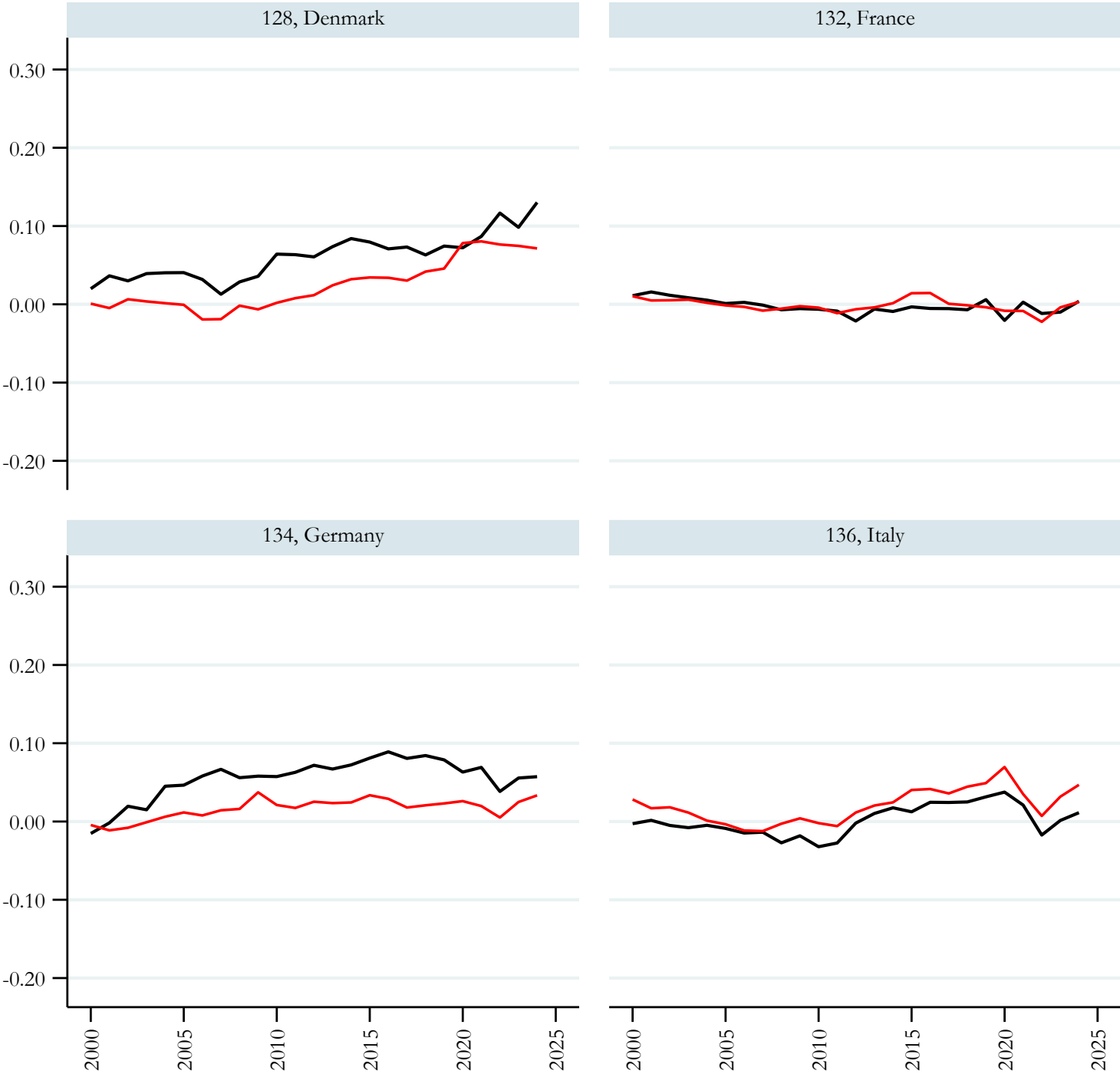
CA: Actual and EBA Fitted Values (extended to 2024)



International Financial Statistics country code

— Current account balance over GDP
— EBA CA/GDP Fitted

CA: Actual and EBA Fitted Values (extended to 2024)



International Financial Statistics country code

— Current account balance over GDP
— EBA CA/GDP Fitted

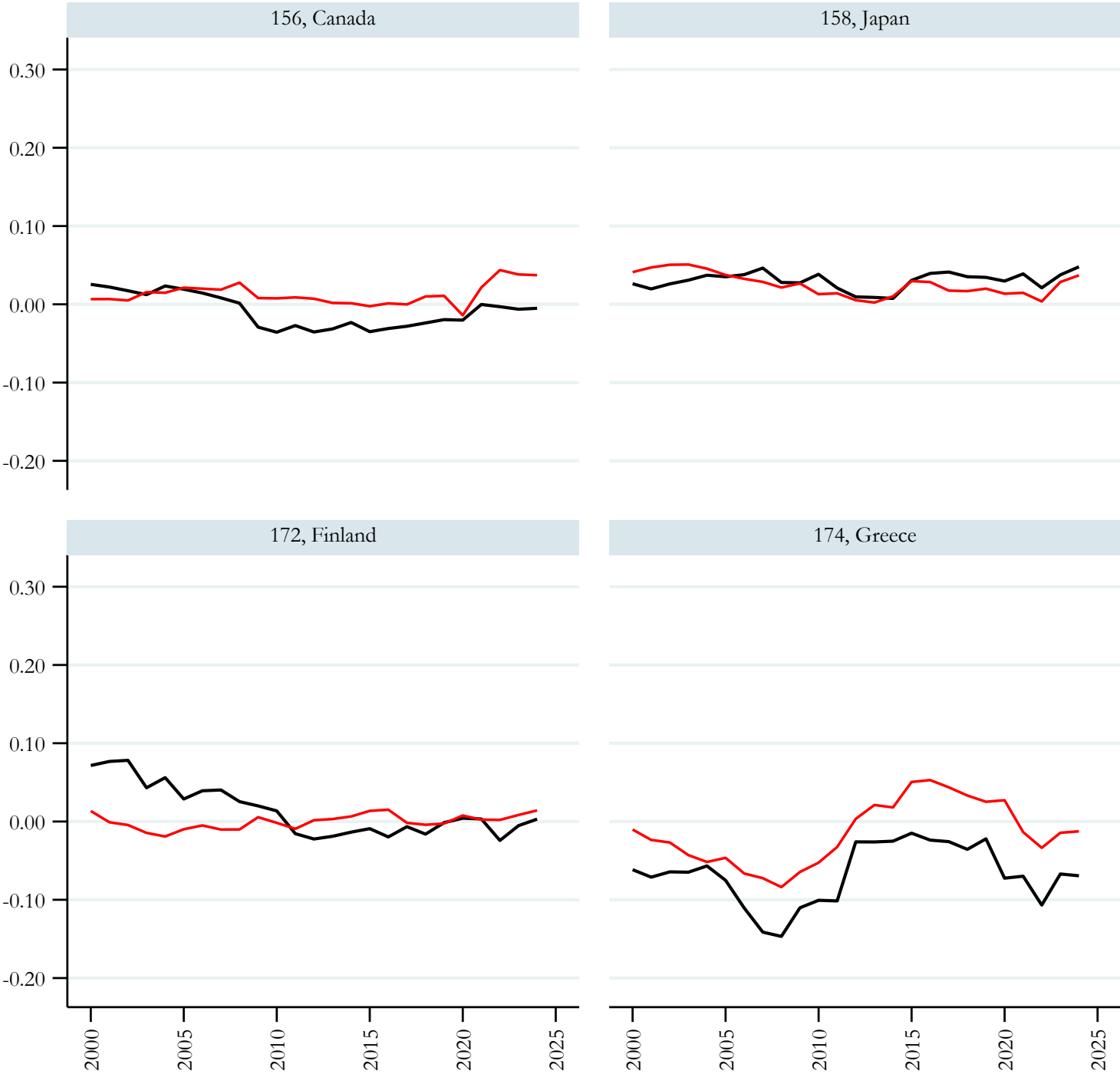
CA: Actual and EBA Fitted Values (extended to 2024)



International Financial Statistics country code

— Current account balance over GDP
— EBA CA/GDP Fitted

CA: Actual and EBA Fitted Values (extended to 2024)



International Financial Statistics country code

— Current account balance over GDP
— EBA CA/GDP Fitted

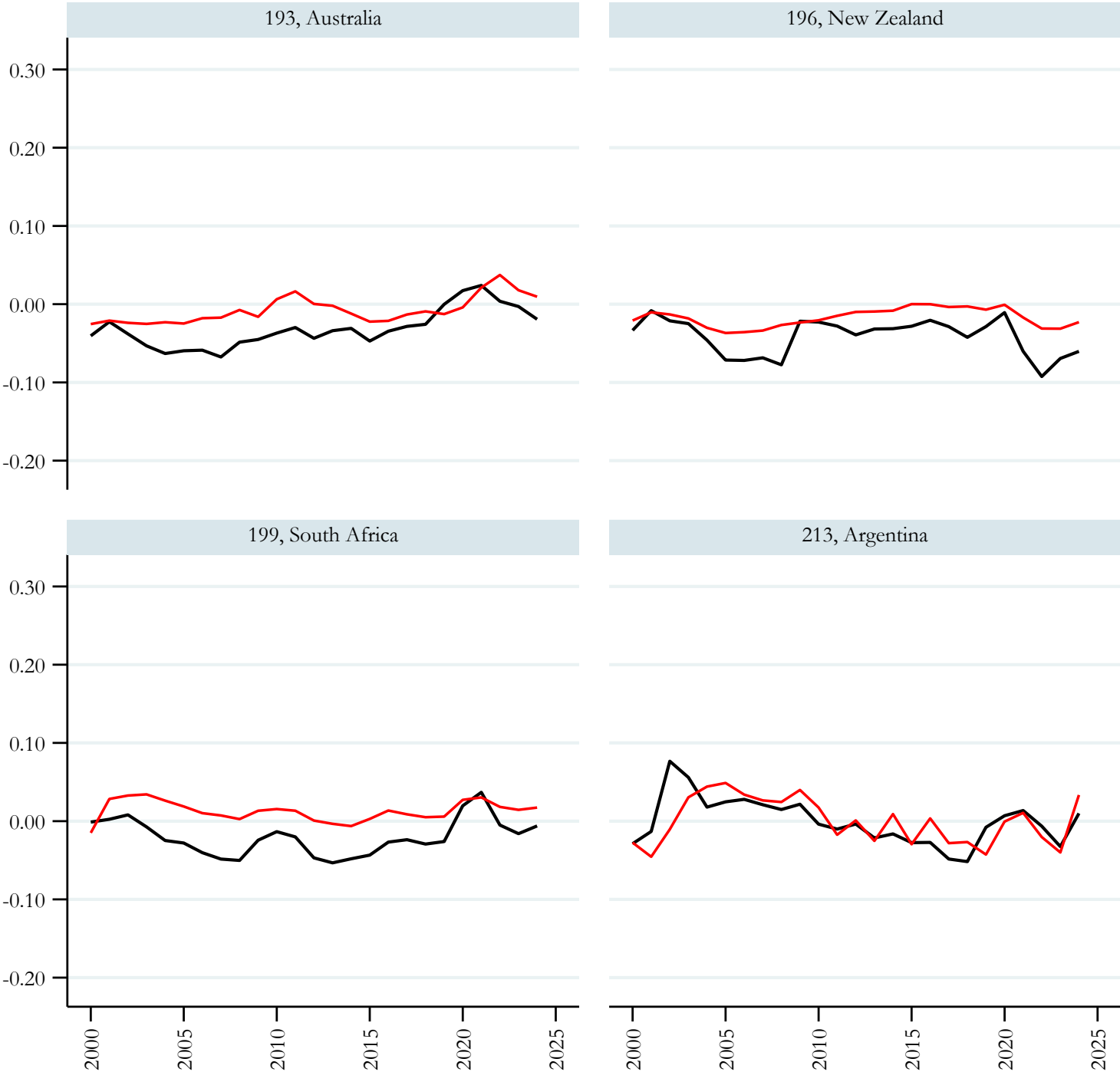
CA: Actual and EBA Fitted Values (extended to 2024)



International Financial Statistics country code

— Current account balance over GDP
— EBA CA/GDP Fitted

CA: Actual and EBA Fitted Values (extended to 2024)



International Financial Statistics country code

— Current account balance over GDP
— EBA CA/GDP Fitted

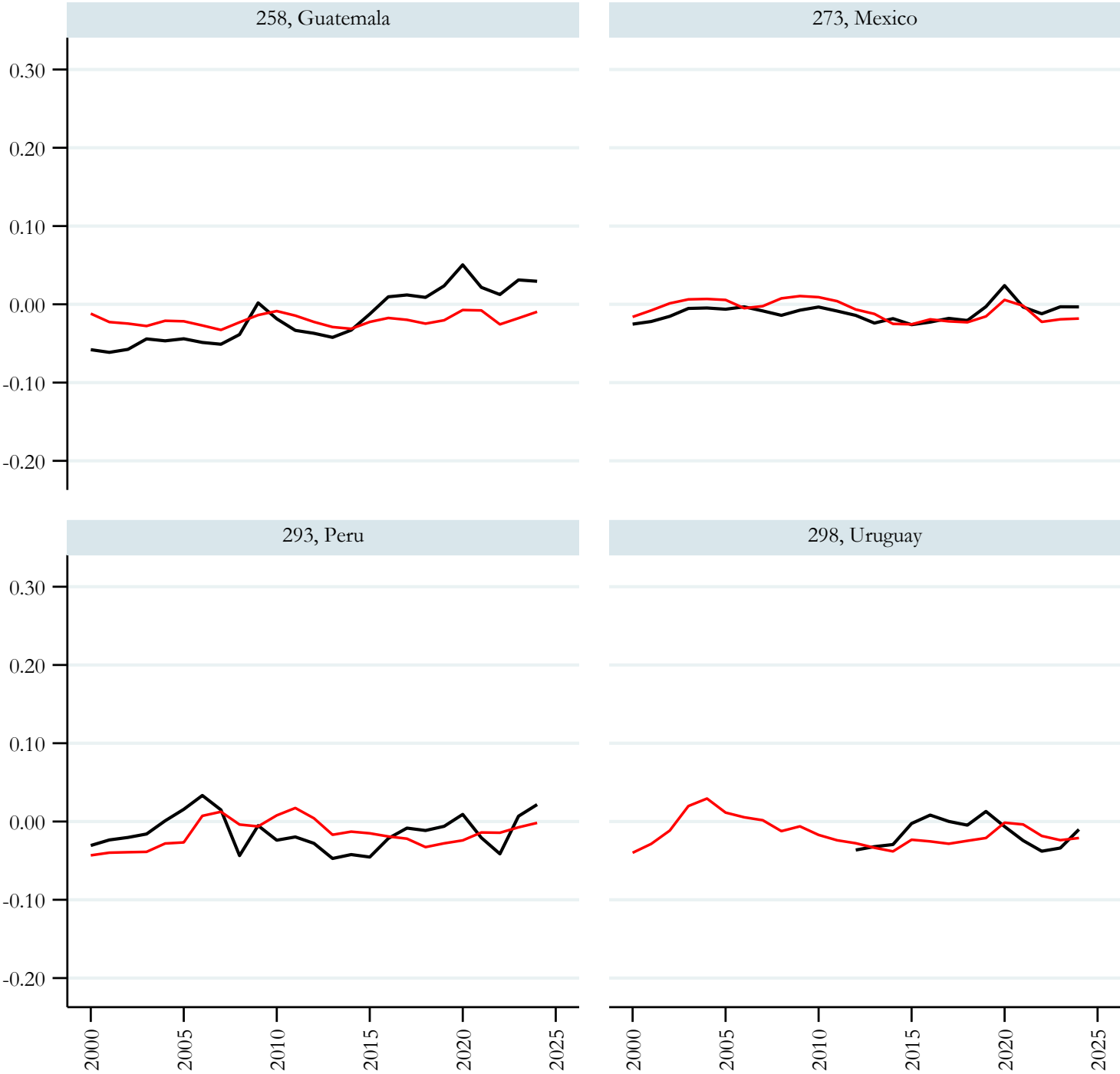
CA: Actual and EBA Fitted Values (extended to 2024)



International Financial Statistics country code

— Current account balance over GDP
— EBA CA/GDP Fitted

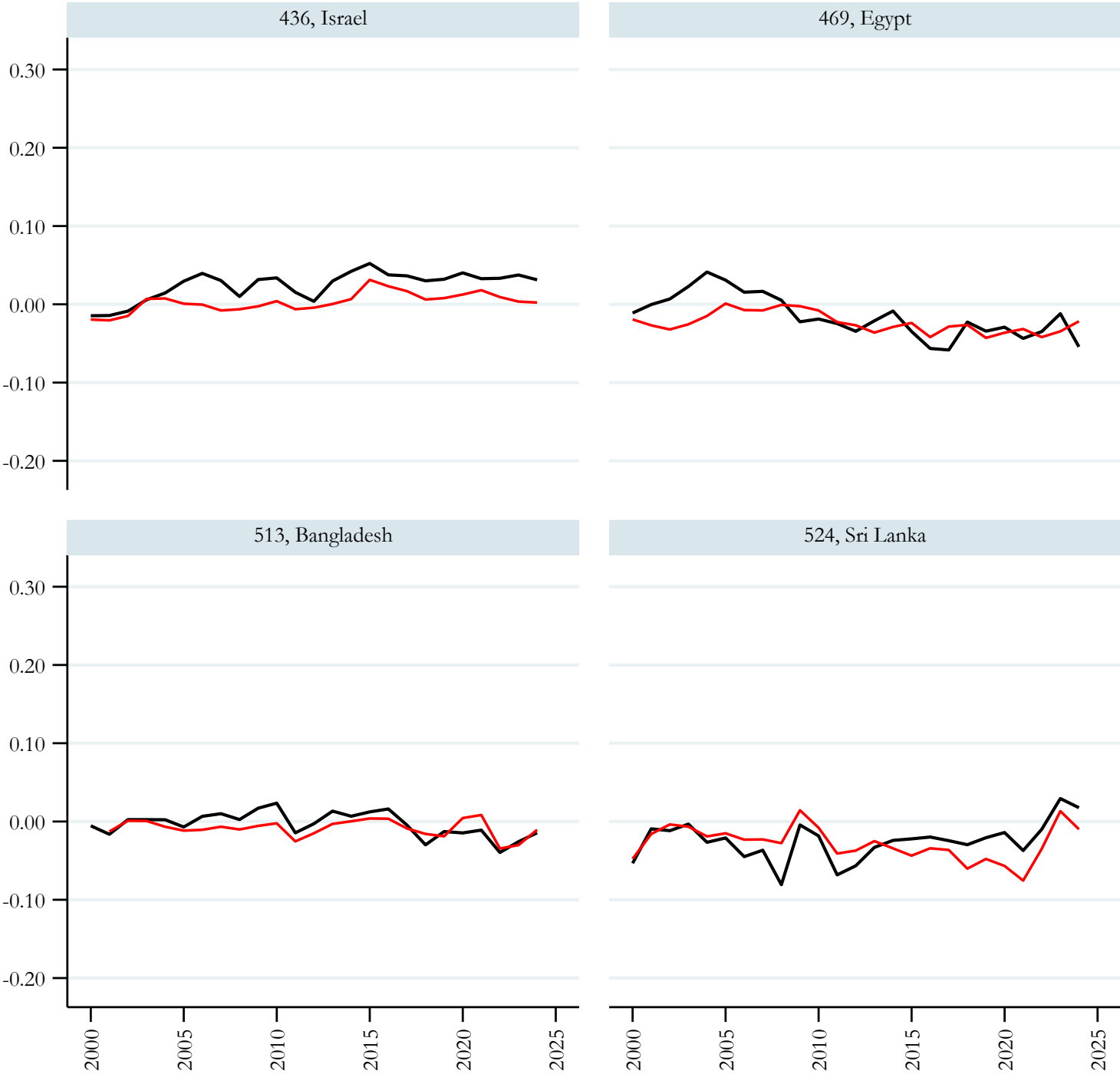
CA: Actual and EBA Fitted Values (extended to 2024)



International Financial Statistics country code

— Current account balance over GDP
— EBA CA/GDP Fitted

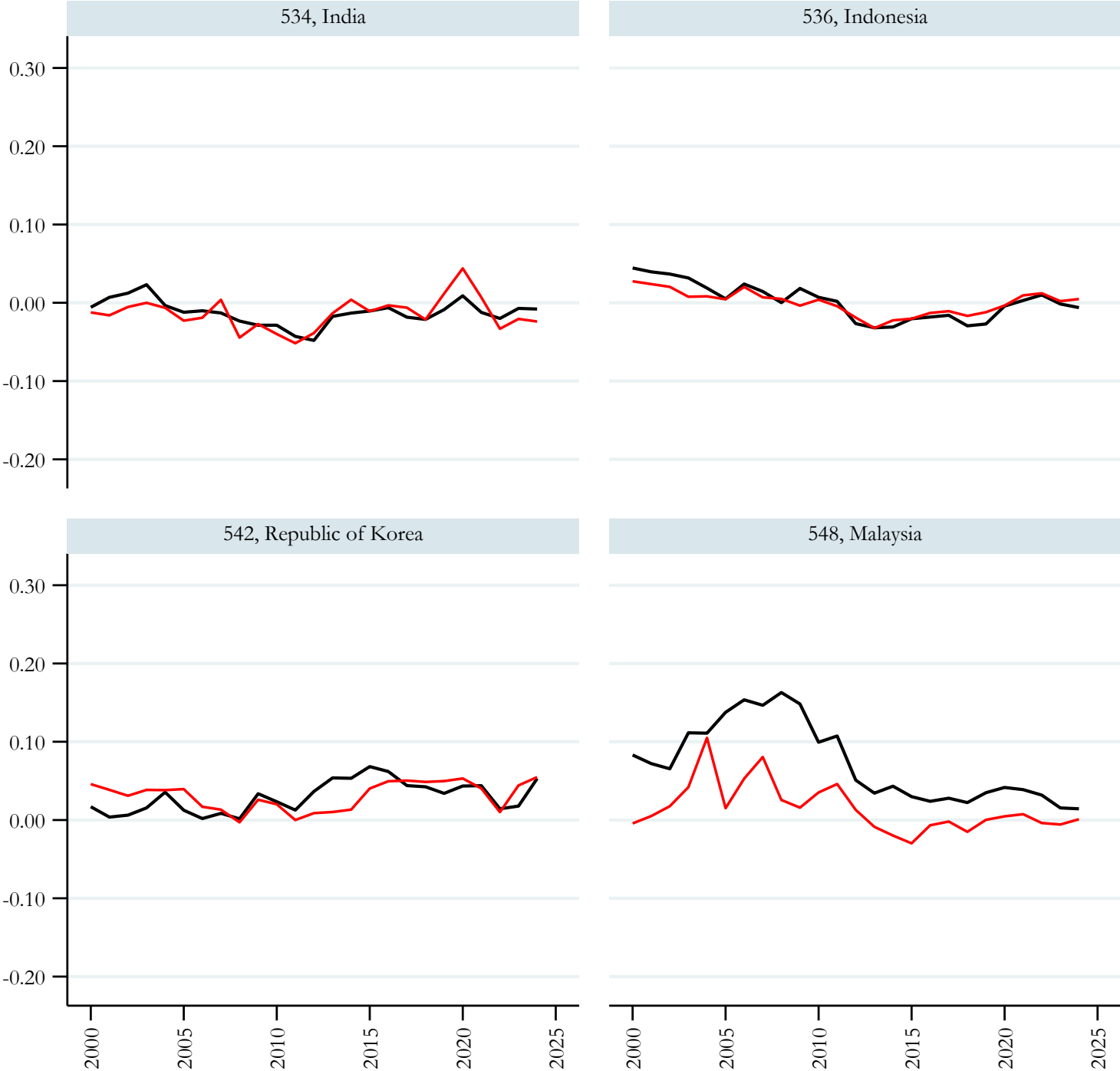
CA: Actual and EBA Fitted Values (extended to 2024)



International Financial Statistics country code

— Current account balance over GDP
— EBA CA/GDP Fitted

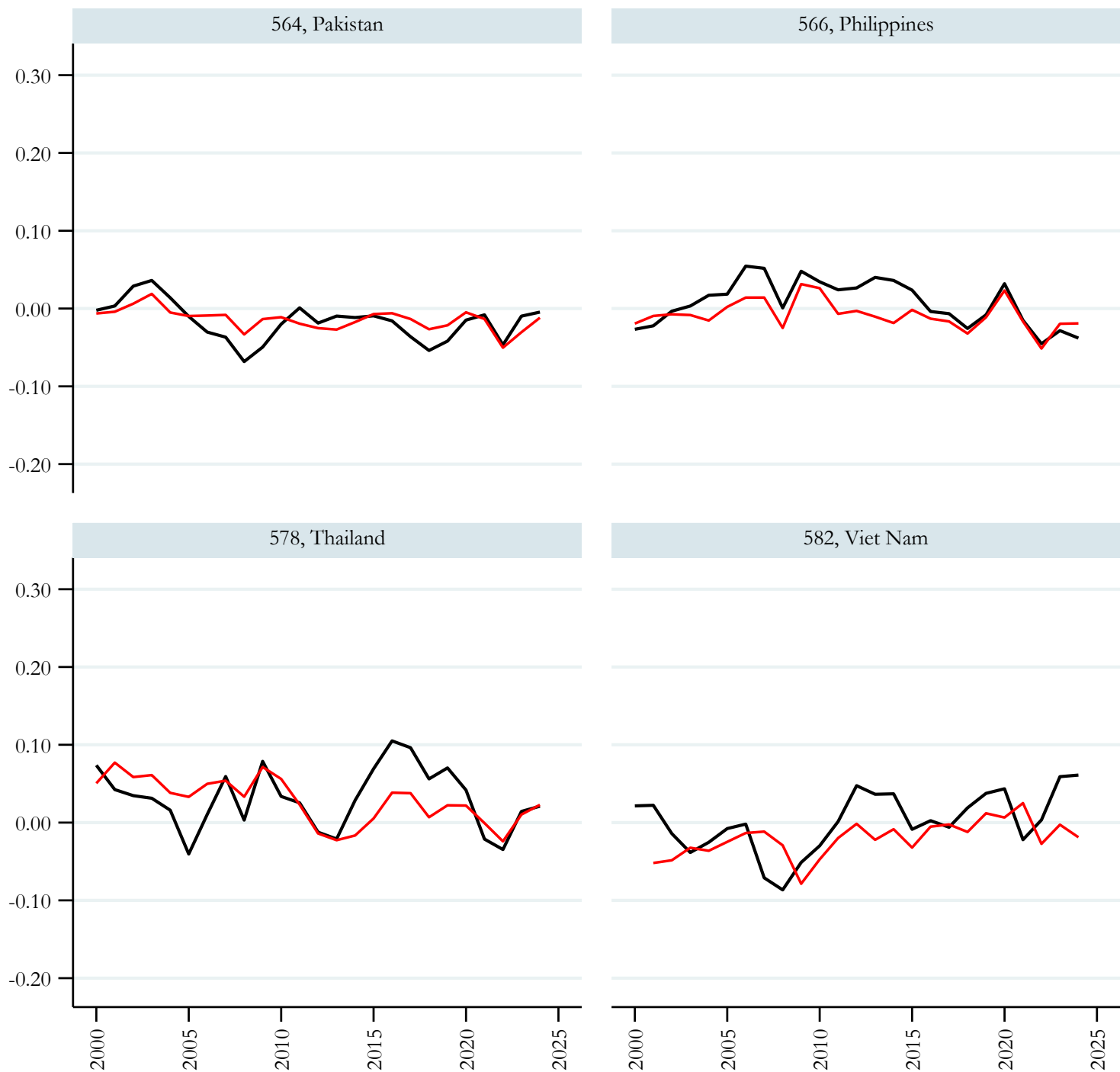
CA: Actual and EBA Fitted Values (extended to 2024)



International Financial Statistics country code

— Current account balance over GDP
— EBA CA/GDP Fitted

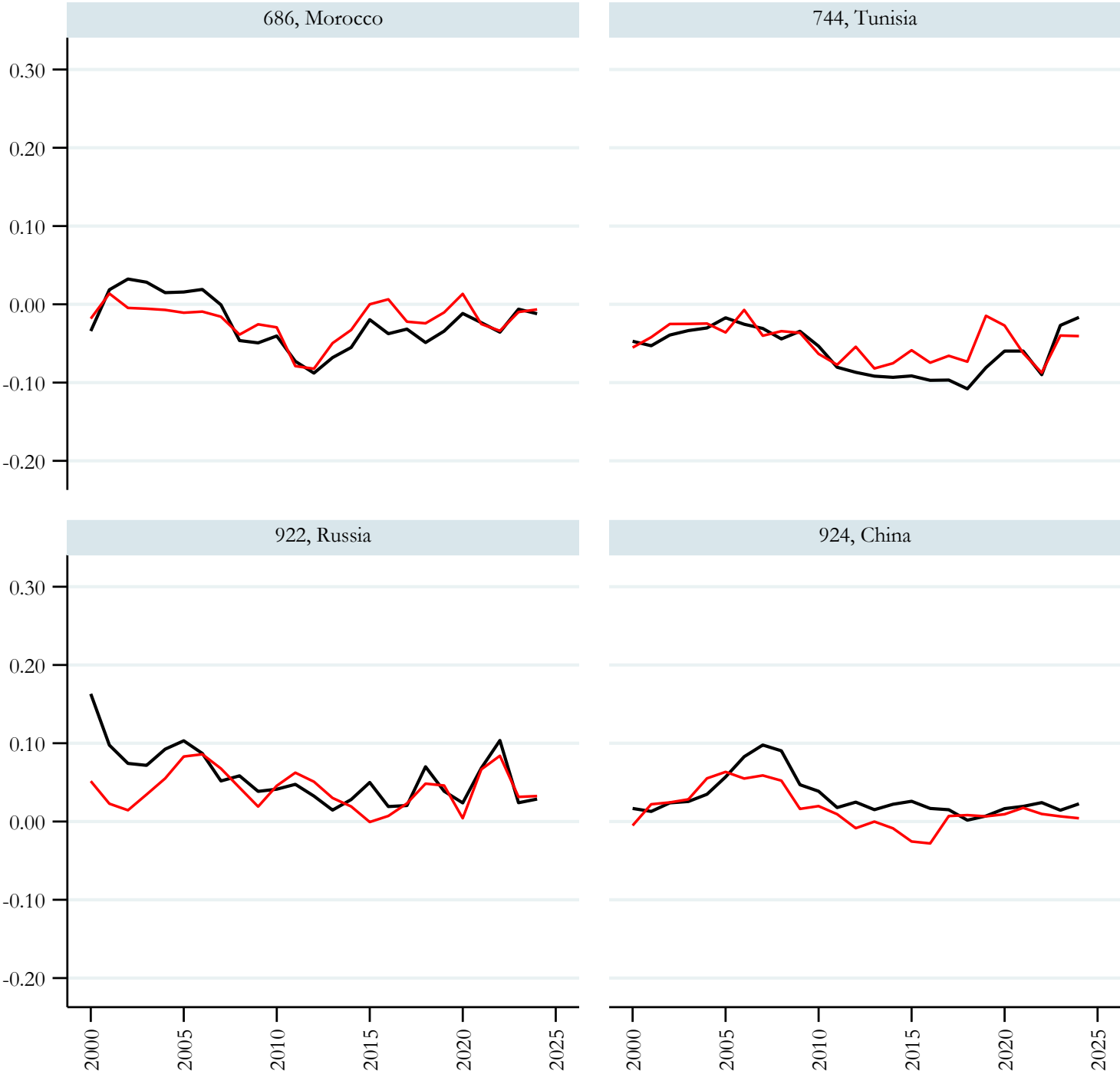
CA: Actual and EBA Fitted Values (extended to 2024)



International Financial Statistics country code

— Current account balance over GDP
— EBA CA/GDP Fitted

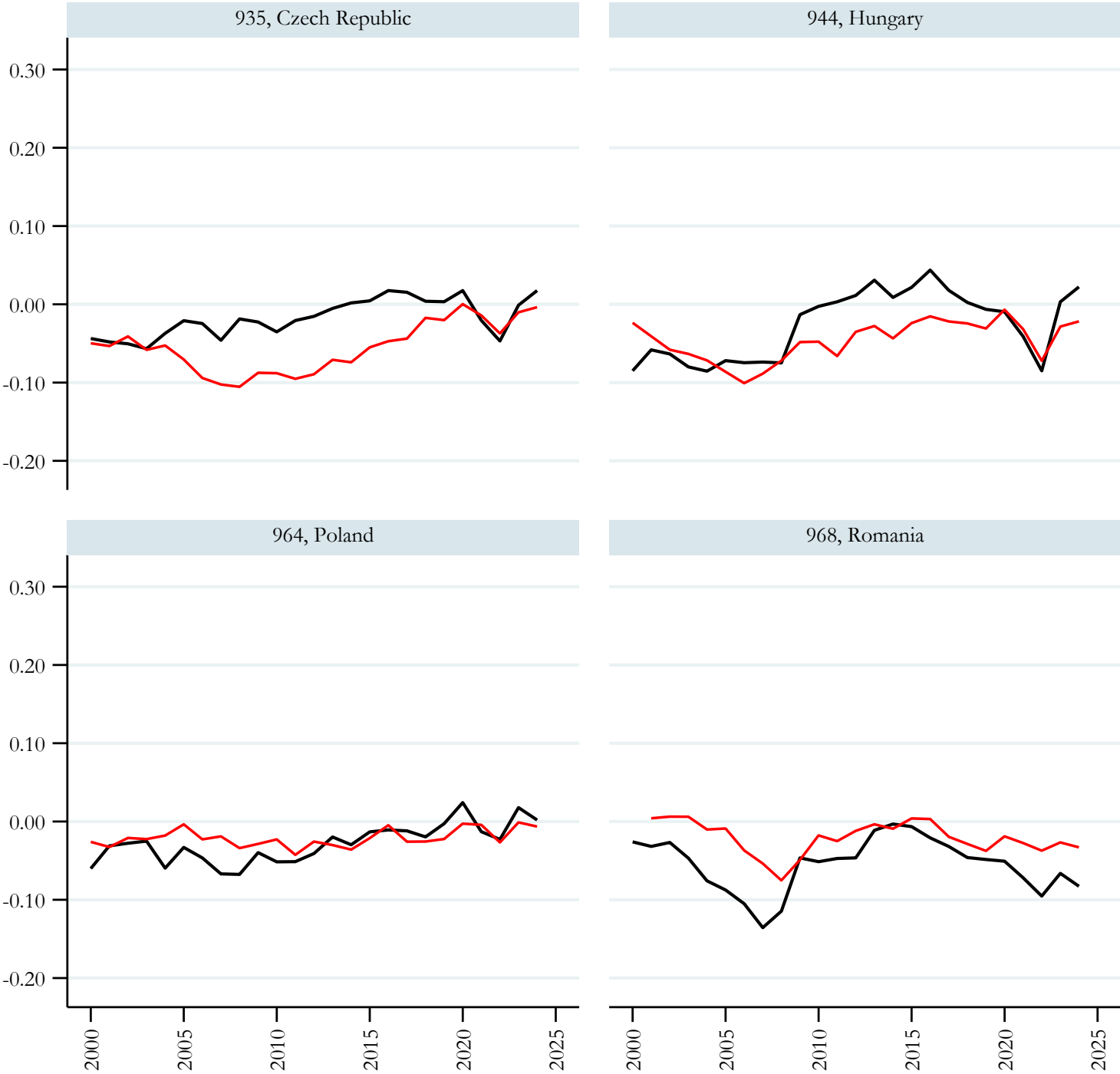
CA: Actual and EBA Fitted Values (extended to 2024)



International Financial Statistics country code

— Current account balance over GDP
— EBA CA/GDP Fitted

CA: Actual and EBA Fitted Values (extended to 2024)



International Financial Statistics country code

— Current account balance over GDP
— EBA CA/GDP Fitted